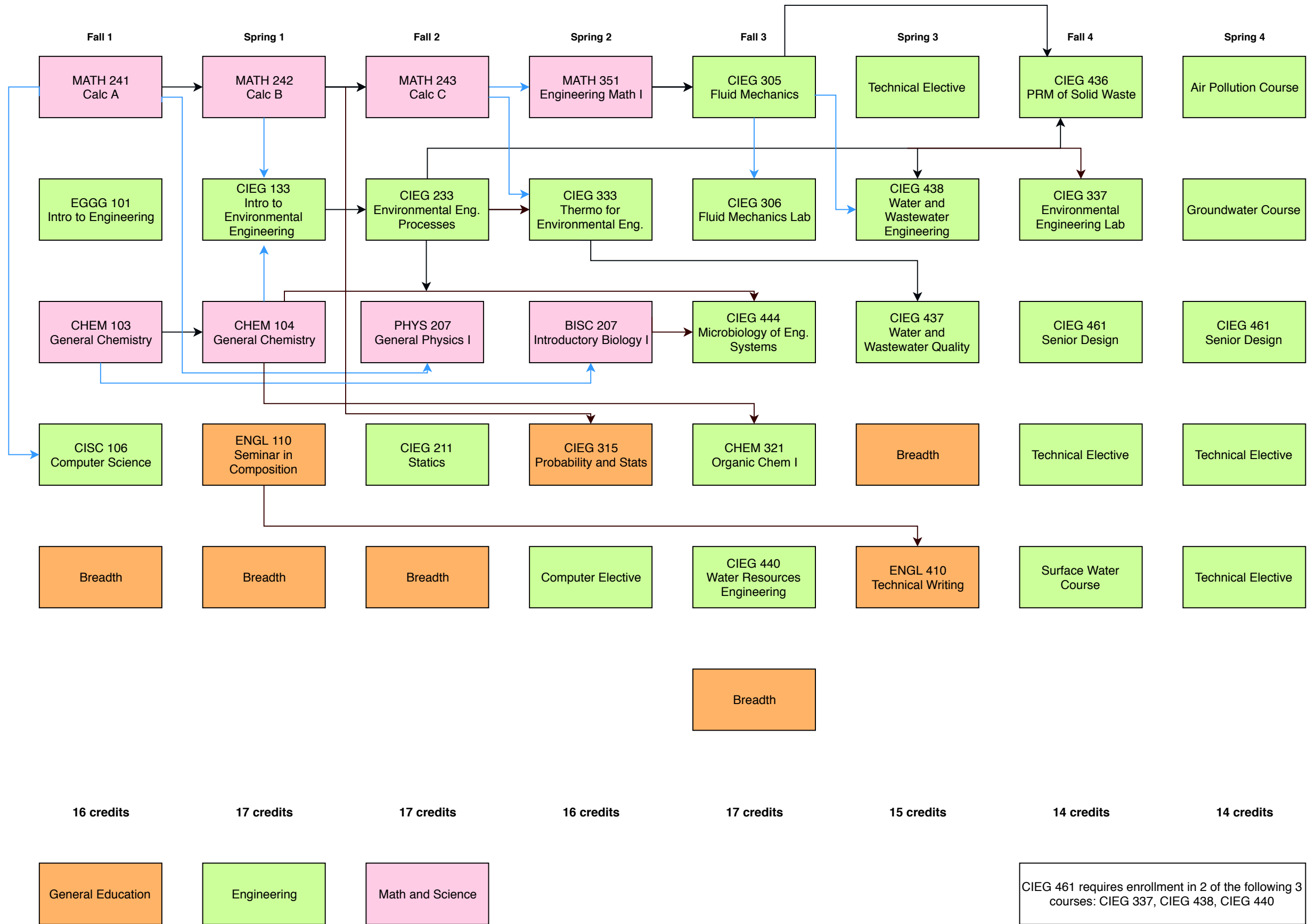


Environmental Engineering



Fall 1

Spring 1

Fall 2

Spring 2

Fall 3

Spring 3

Fall 4

Spring 4

MATH 241
Calc A

MATH 242
Calc B

MATH 243
Calc C

MATH 351
Engineering Math I

CIEG 305
Fluid Mechanics

Technical Elective

CIEG 436
PRM of Solid Waste

Air Pollution Course

EGGG 101
Intro to Engineering

CIEG 133
Intro to Environmental Engineering

CIEG 233
Environmental Eng. Processes

CIEG 333
Thermo for Environmental Eng.

CIEG 306
Fluid Mechanics Lab

CIEG 438
Water and Wastewater Engineering

CIEG 337
Environmental Engineering Lab

Groundwater Course

CHEM 103
General Chemistry

CHEM 104
General Chemistry

PHYS 207
General Physics I

BISC 207
Introductory Biology I

CIEG 444
Microbiology of Eng. Systems

CIEG 437
Water and Wastewater Quality

CIEG 461
Senior Design

CIEG 461
Senior Design

CISC 106
Computer Science

ENGL 110
Seminar in Composition

CIEG 211
Statics

CIEG 315
Probability and Stats

CHEM 321
Organic Chem I

Breadth

Technical Elective

Technical Elective

Breadth

Breadth

Breadth

Computer Elective

CIEG 440
Water Resources Engineering

ENGL 410
Technical Writing

Surface Water Course

Technical Elective

16 credits

17 credits

17 credits

16 credits

17 credits

15 credits

14 credits

14 credits

General Education

Engineering

Math and Science

CIEG 461 requires enrollment in 2 of the following 3 courses: CIEG 337, CIEG 438, CIEG 440



pre-requisite



co-requisite